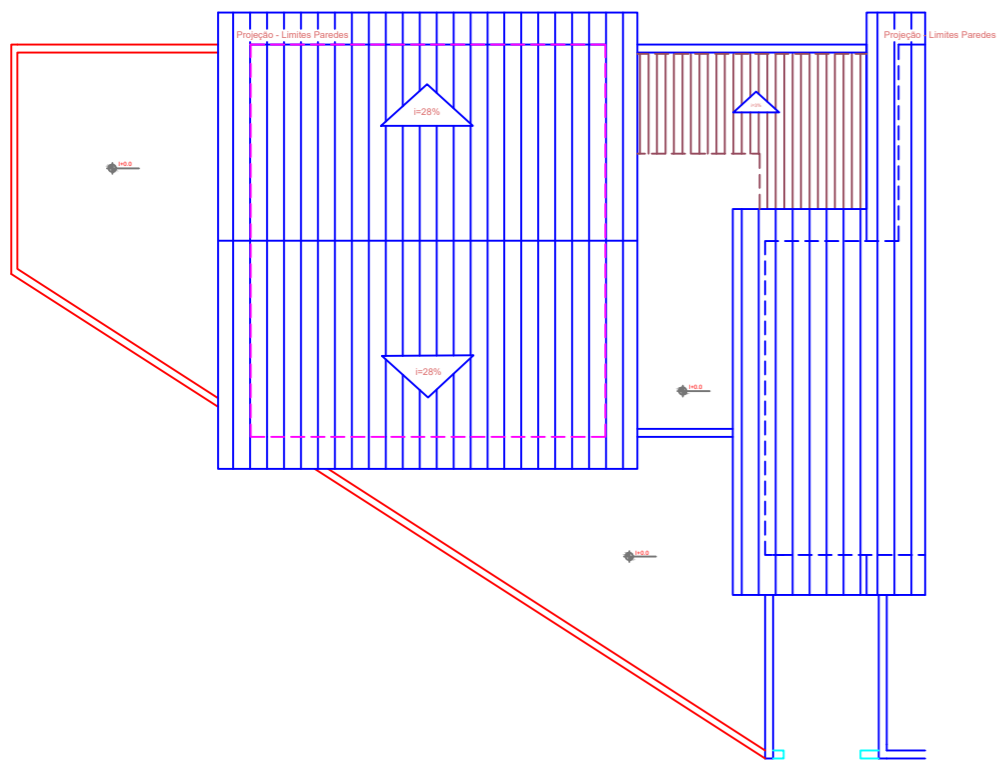


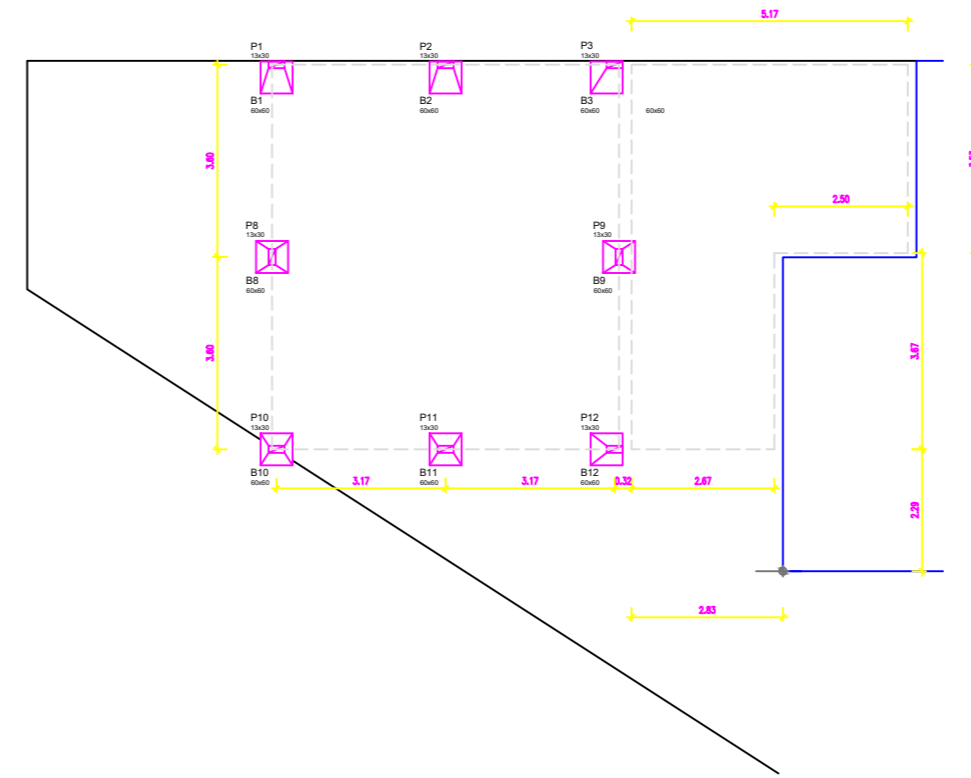
NOTAS:

- C - CONCRETOS:
 - Concreto estrutural 25 Mpa em todas as peças;
 - Base de solo brita no fundo dos blocos de fundação

RESP. TÉCNICO			
	DESCRIÇÃO	DATA	FOR
RESPONSÁVEL TÉCNICO: Gilmar dos Santos CREA 271777733			
PROPRIETÁRIO:		Prefeitura Municipal de Japoatã Praça da Matriz, 457, Centro - Japoatã/Sergipe/Brasil	
DESCRIÇÃO: AMPLIAÇÃO E REFORMA - ESCOLA ESTRUTURA E FUNDAÇÃO			
PLANTA BAIXA			
ESCALA	DATA		
	Jan/2022		
ASSINATURA:			



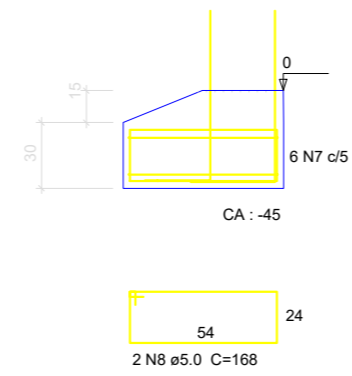
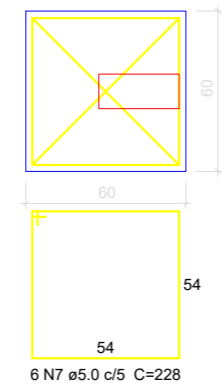
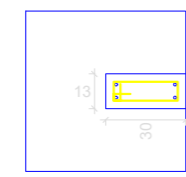
PLANTA DE COBERTURA - INFERIOR
AMPLIAÇÃO ESCOLA - ANEXO A



PLANTA BAIXA - INFERIOR
AMPLIAÇÃO ESCOLA - ANEXO A
LOCALIZAÇÃO ESTRUTURAL

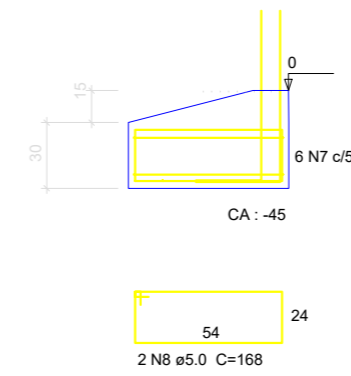
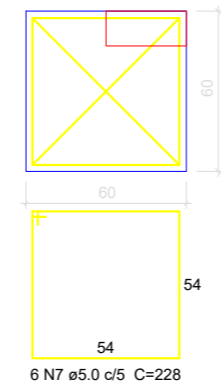
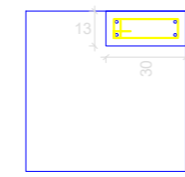
B12=B13=B14

PLANTA
ESC 1:25



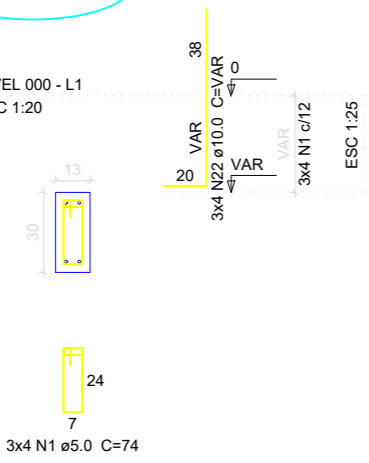
B3=B4=B5=B6=B7

PLANTA
ESC 1:25



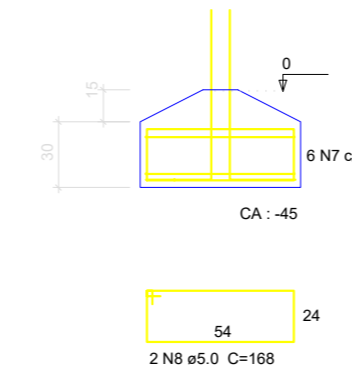
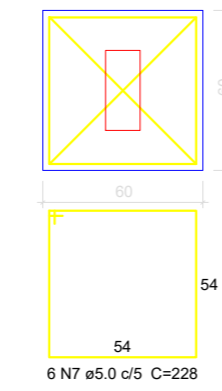
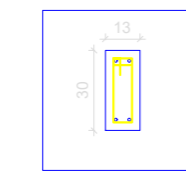
P1= TODOS

NIVEL 000 - L1
ESC 1:20



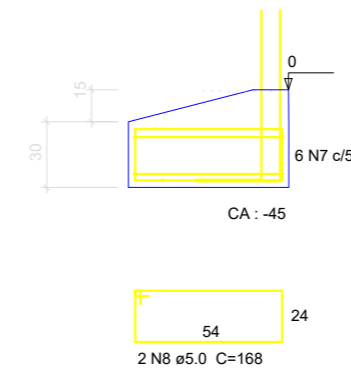
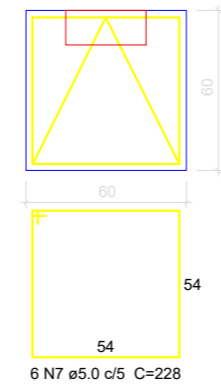
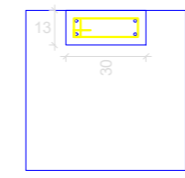
B8=B9=B10=B11

PLANTA
ESC 1:25



B1=B2

PLANTA
ESC 1:25



PLANTA BAIXA - INFERIOR
AMPLIAÇÃO ESCOLA - ANEXO A
DETALHAMENTO ESTRUTURAL

VERMELHO	7	0,1
AMARELO	7	0,2
VERDE	7	0,1
CINZA	7	0,1
ROSA	7	0,2
ROXO	7	0,1
BRANCO	7	0,19
0	0	0,1
1	0	0,2
11	7	0,1
12	12	0,1
13	7	0,1