

Forma do pavimento TIPO I (Nível 320)

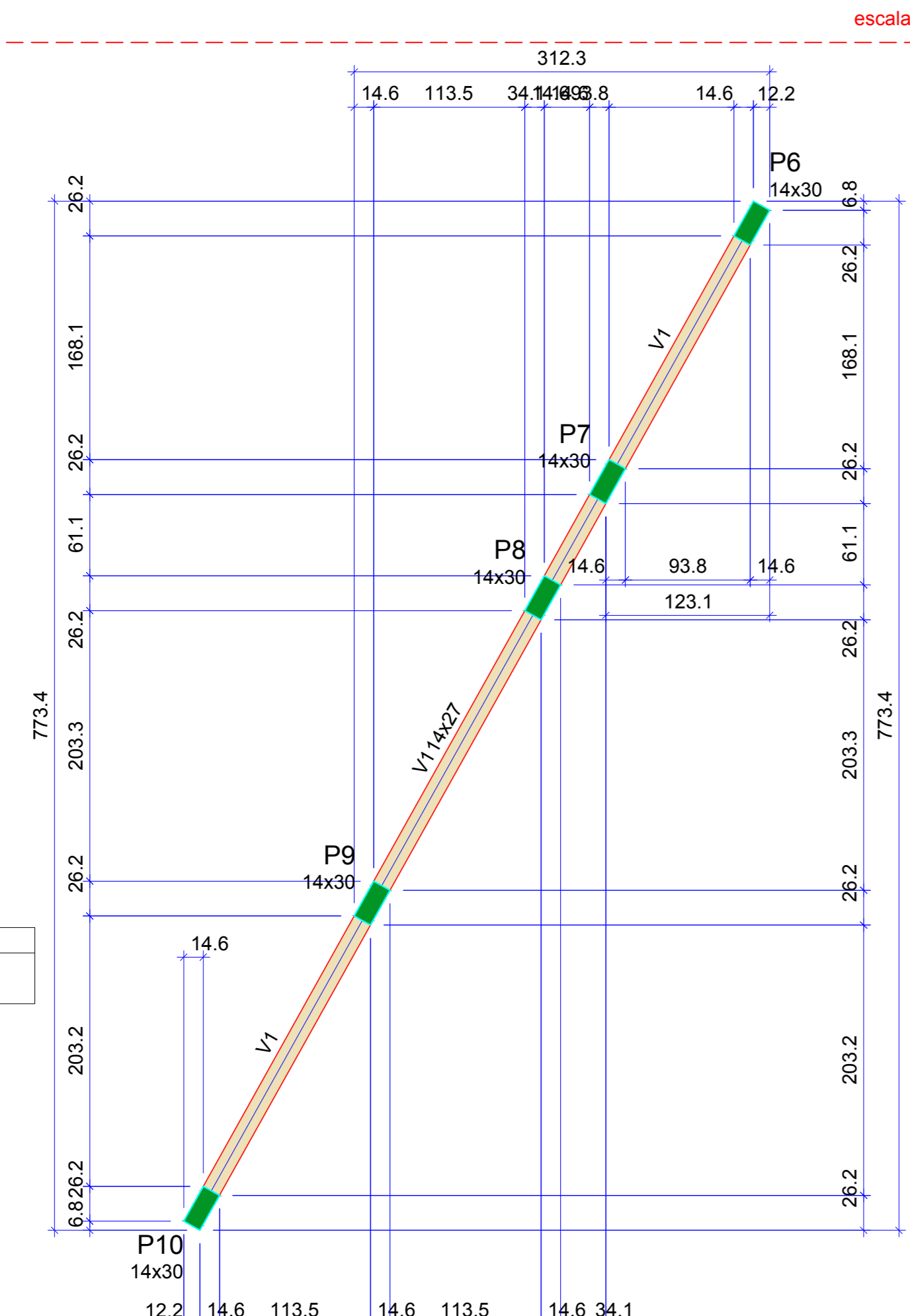
Vigas			
Nome	Seção (cm)	Elevação (cm)	Nível (cm)
V1	14x27	0	600

Características dos materiais			
fck (kgf/cm²)	Ecs (kgf/cm²)	Dimensão máxima do agregado = 19 mm	
250	241500		

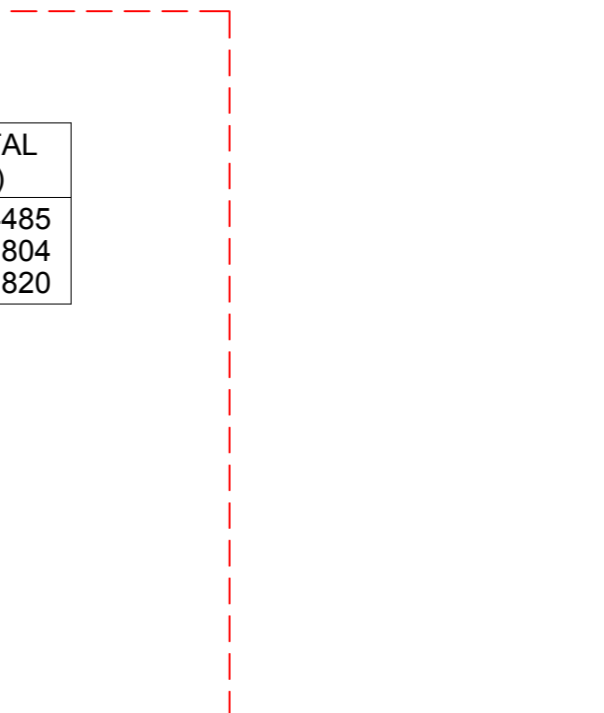
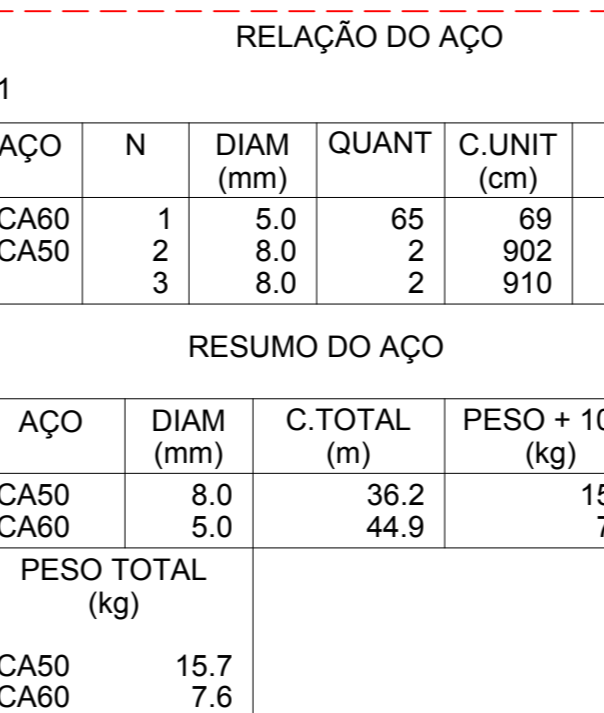
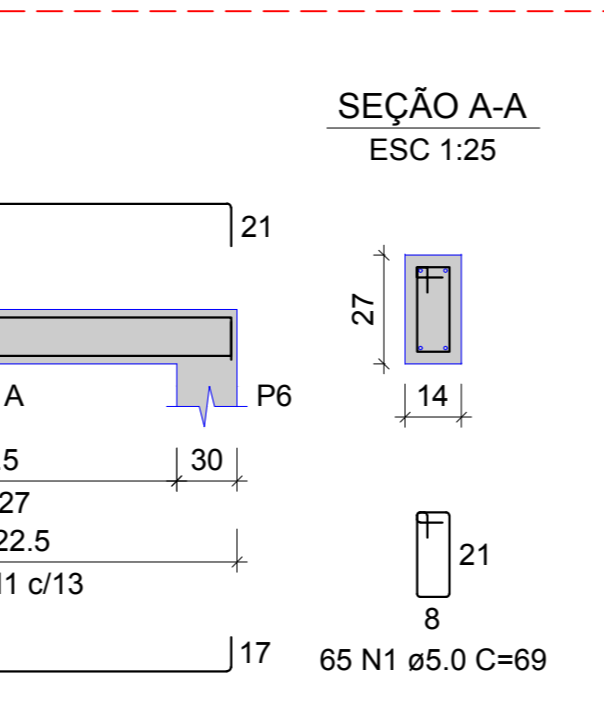
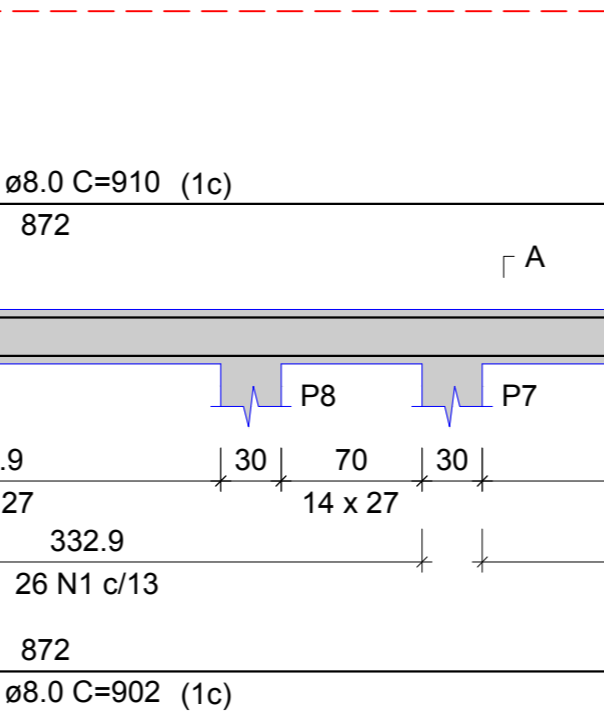
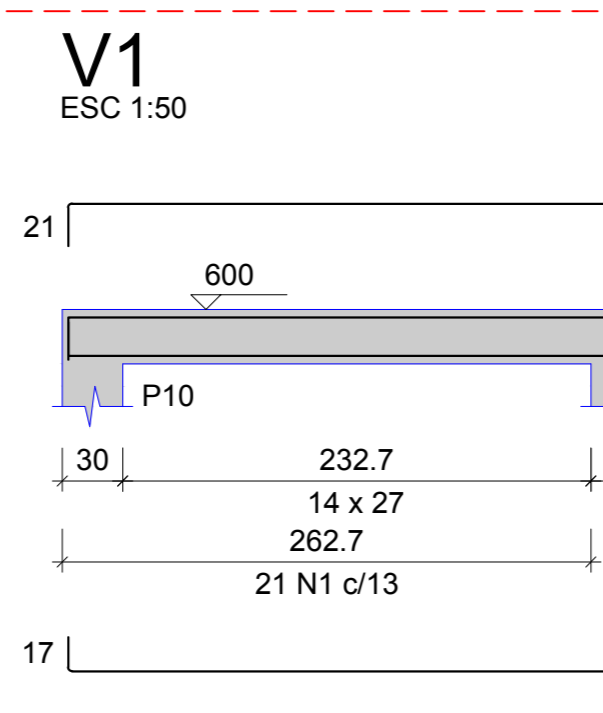
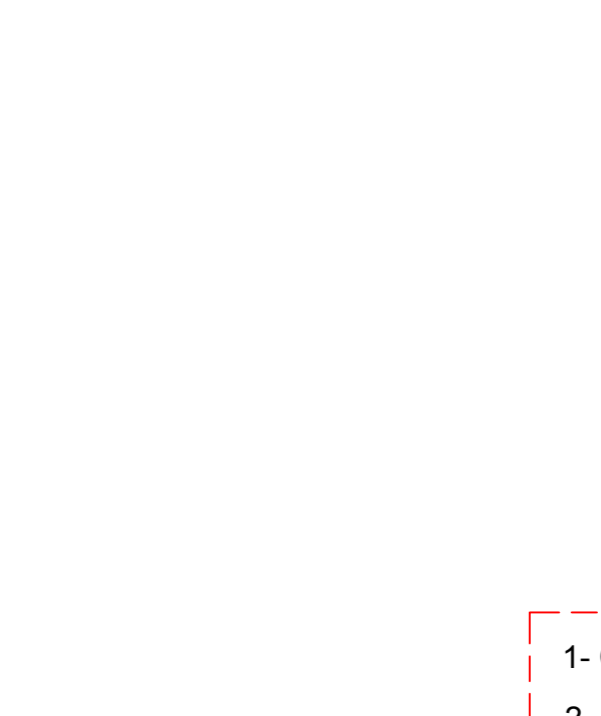
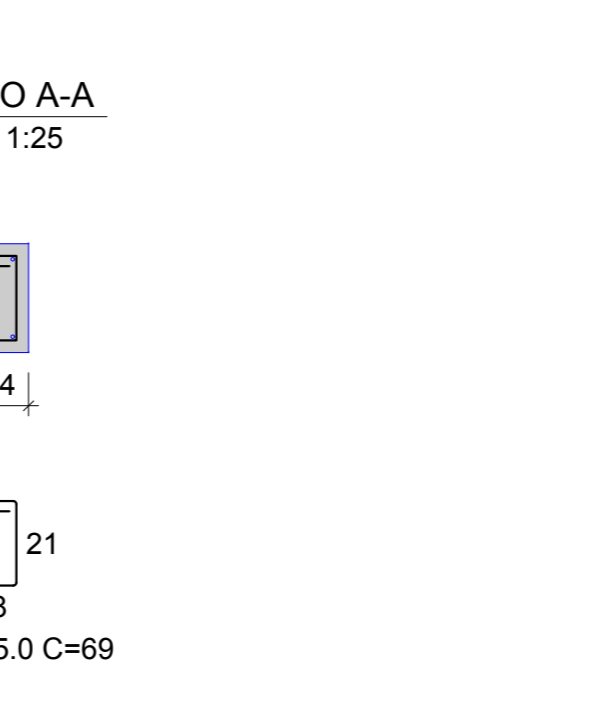
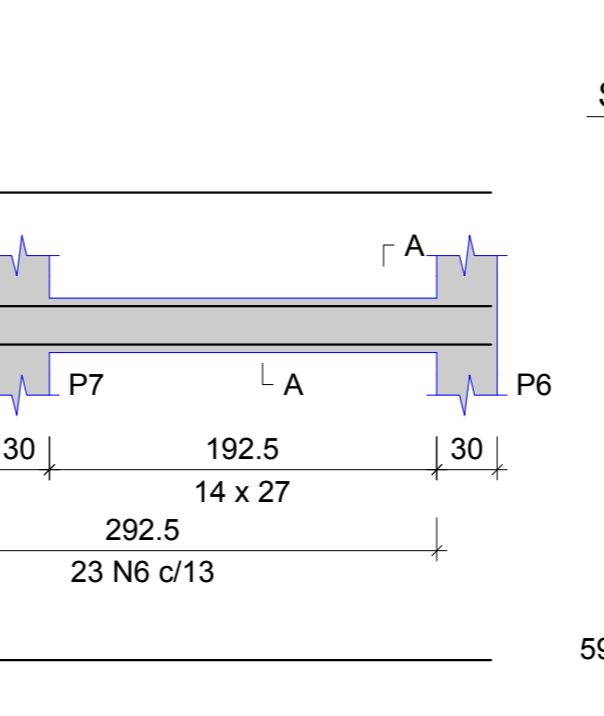
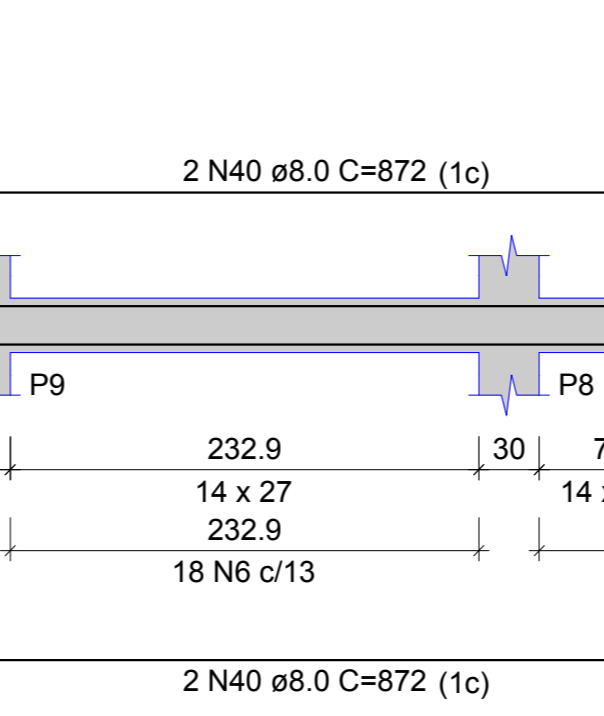
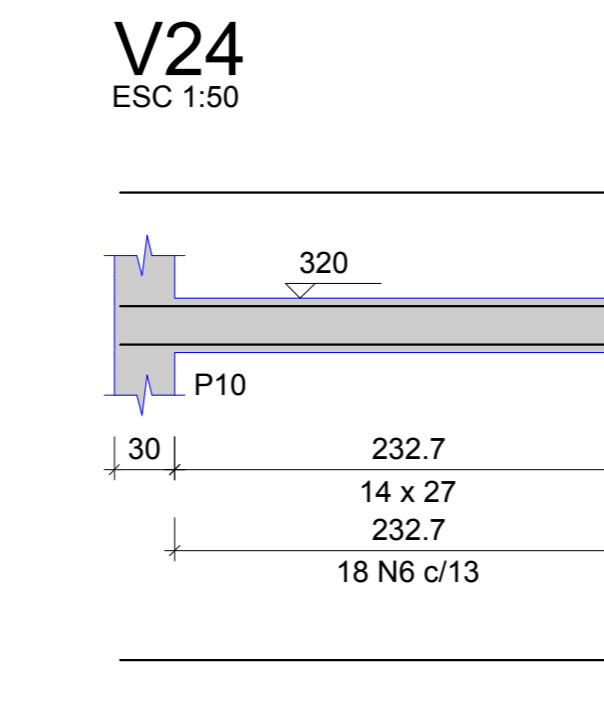
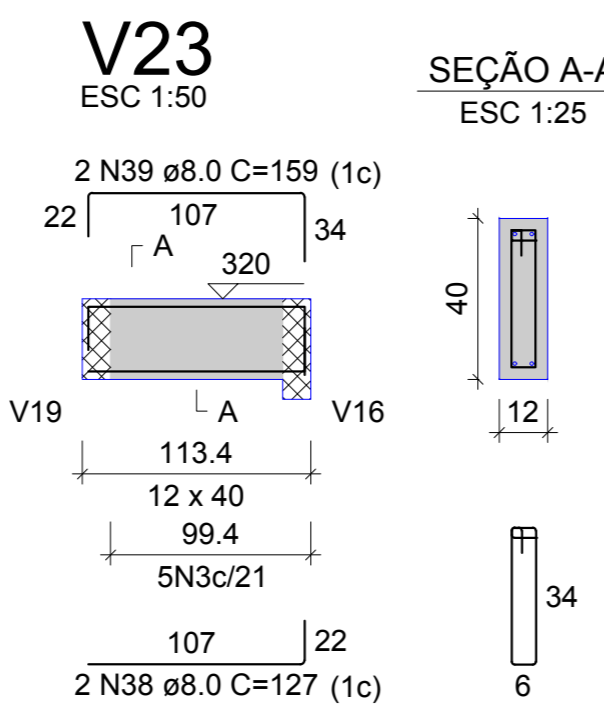
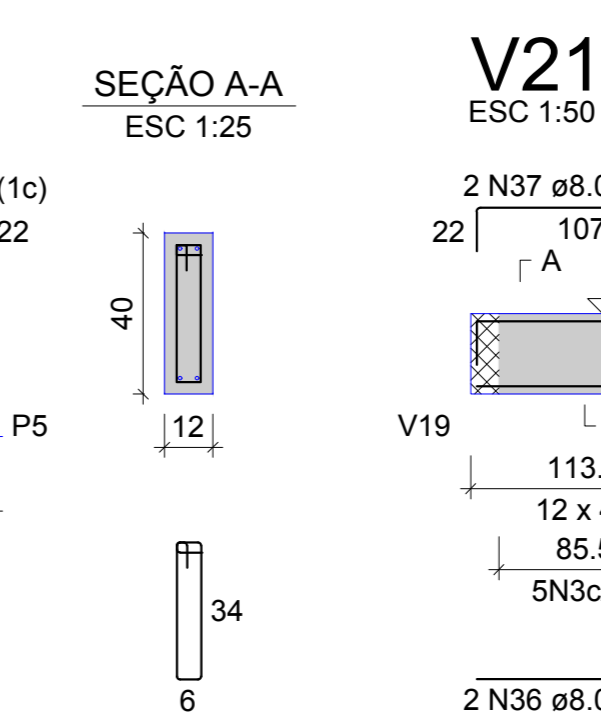
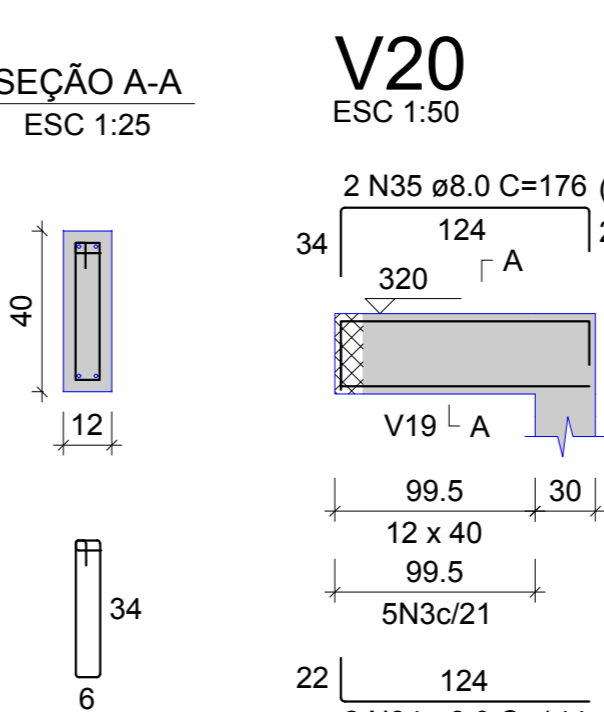
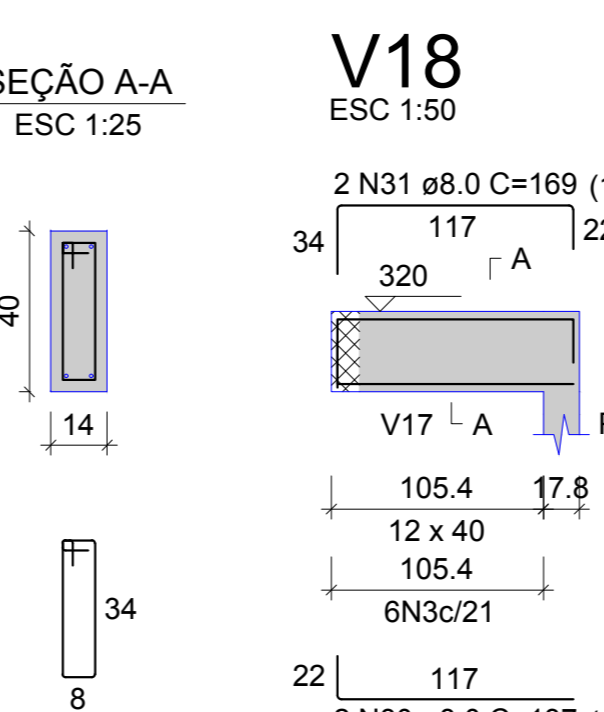
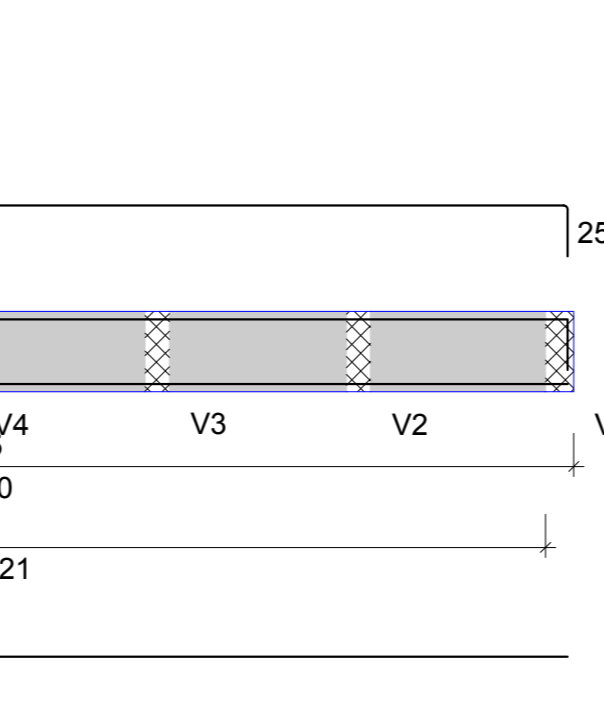
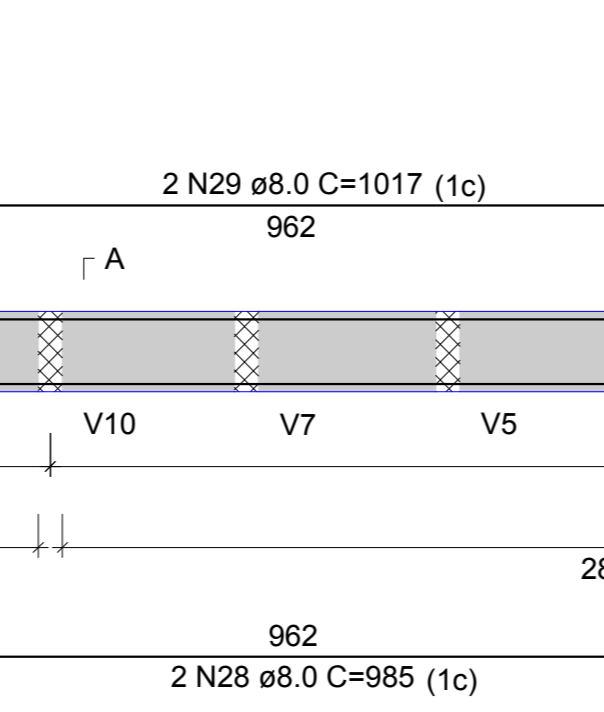
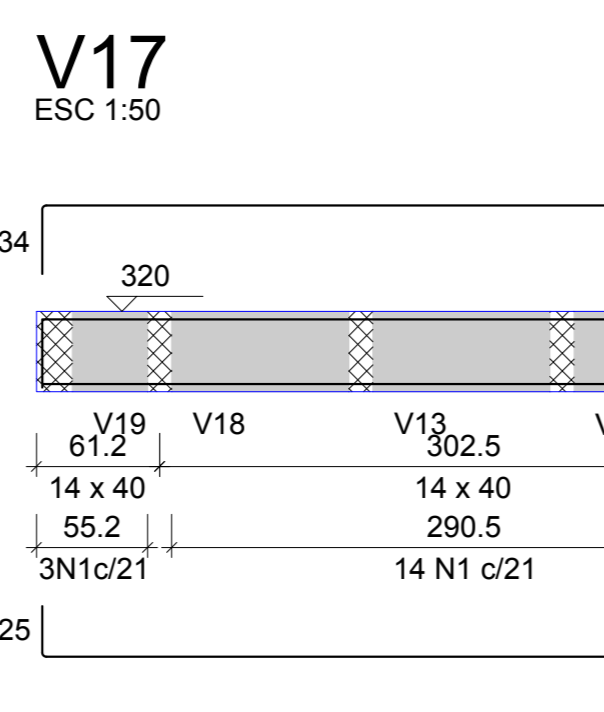
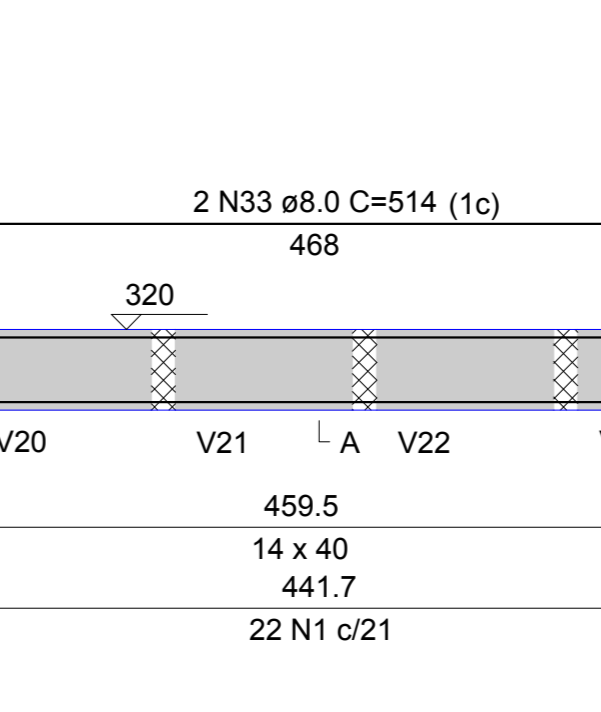
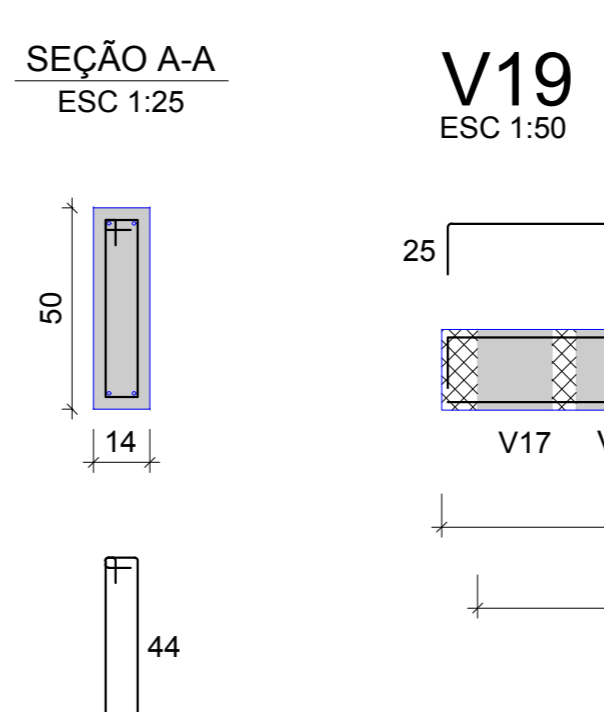
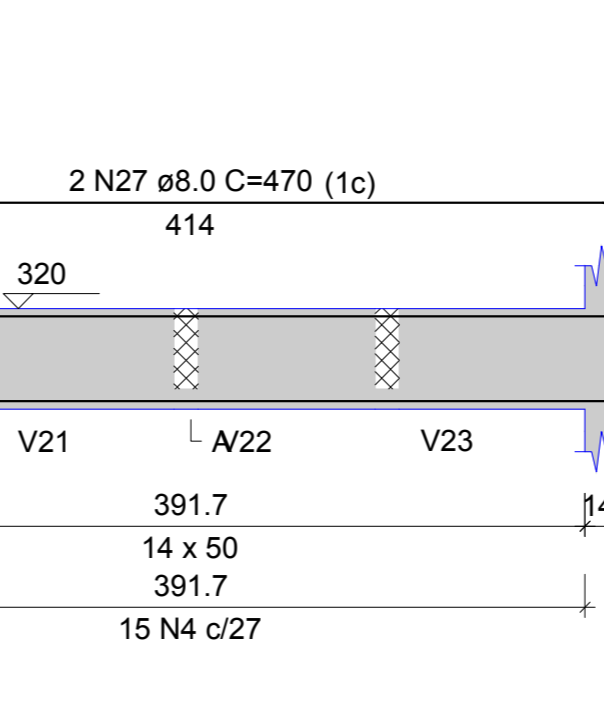
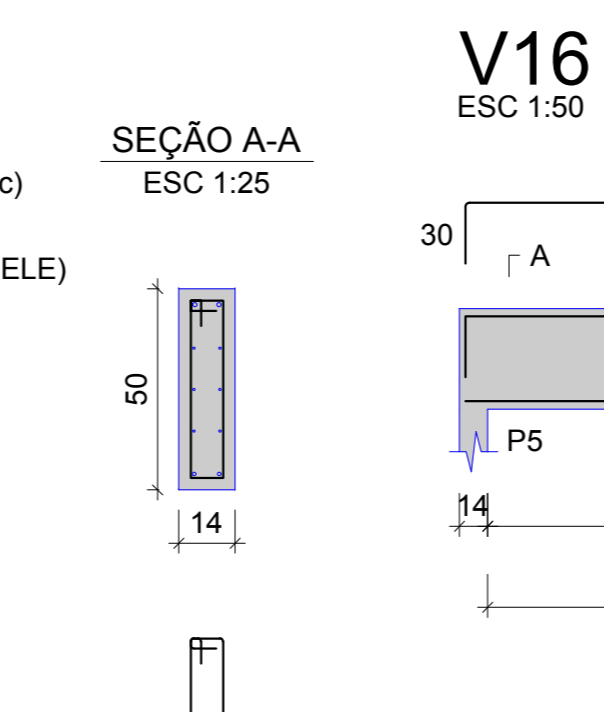
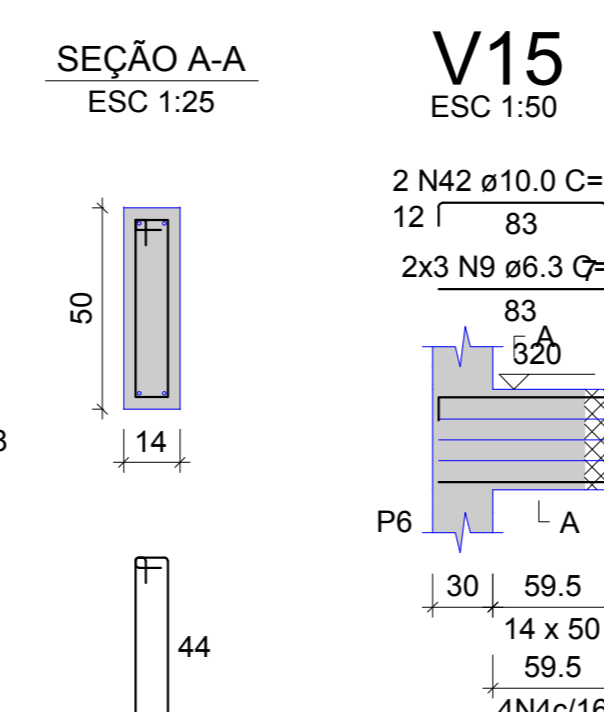
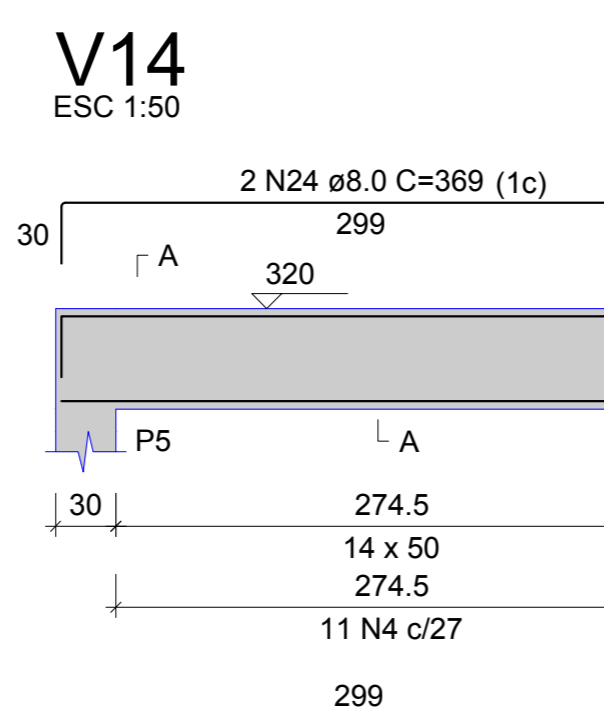
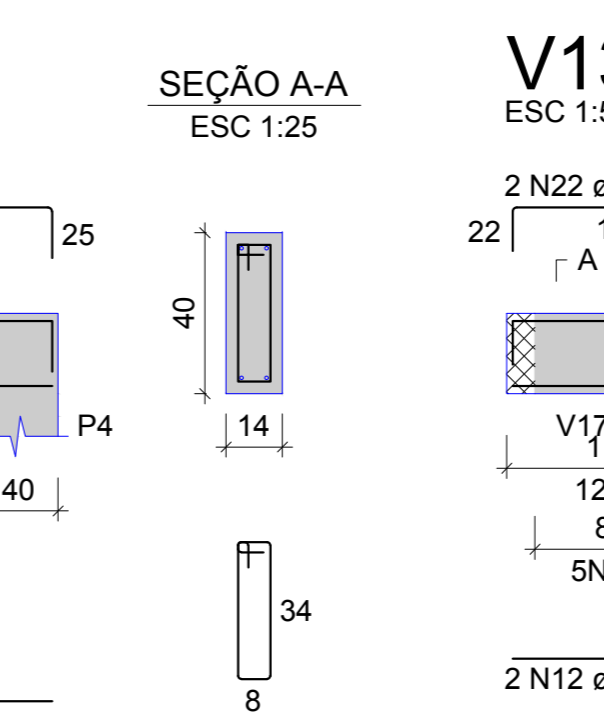
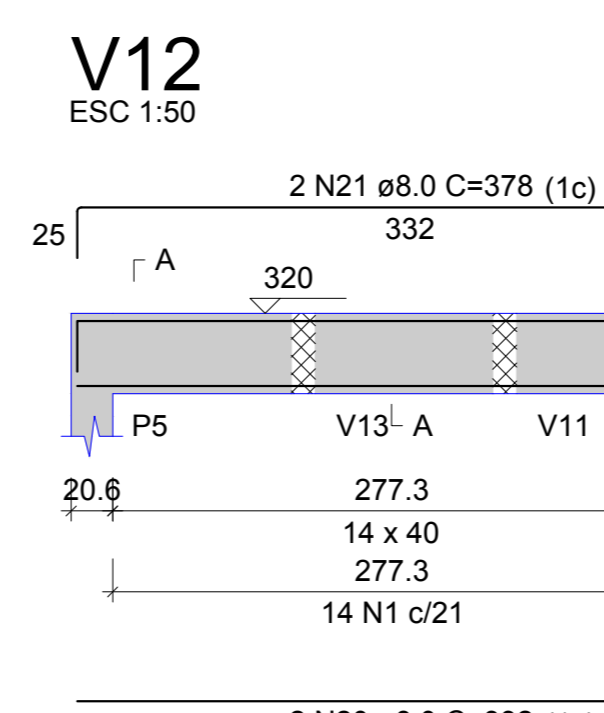
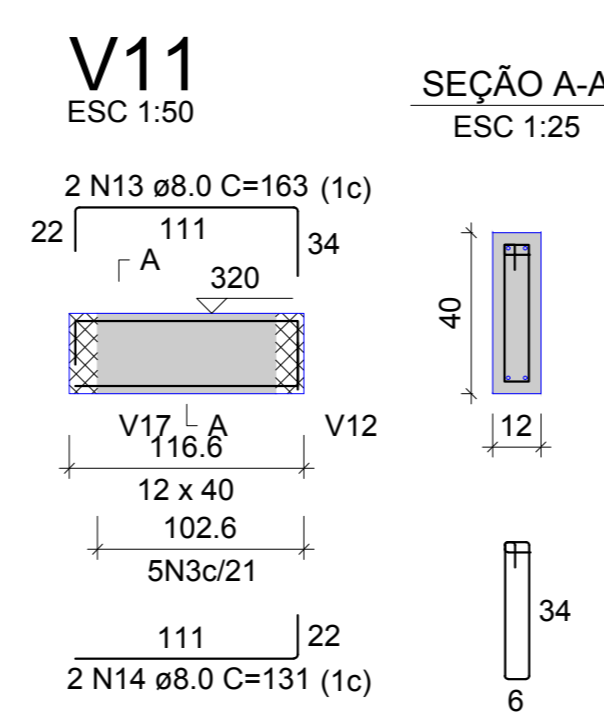
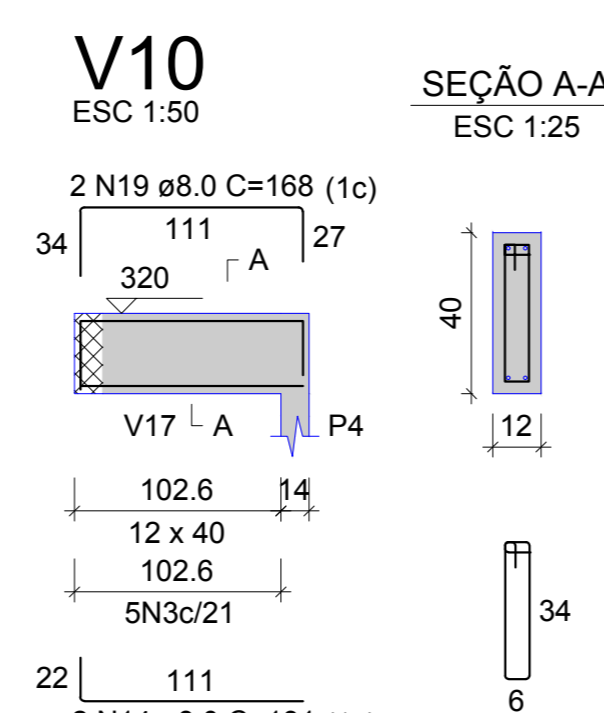
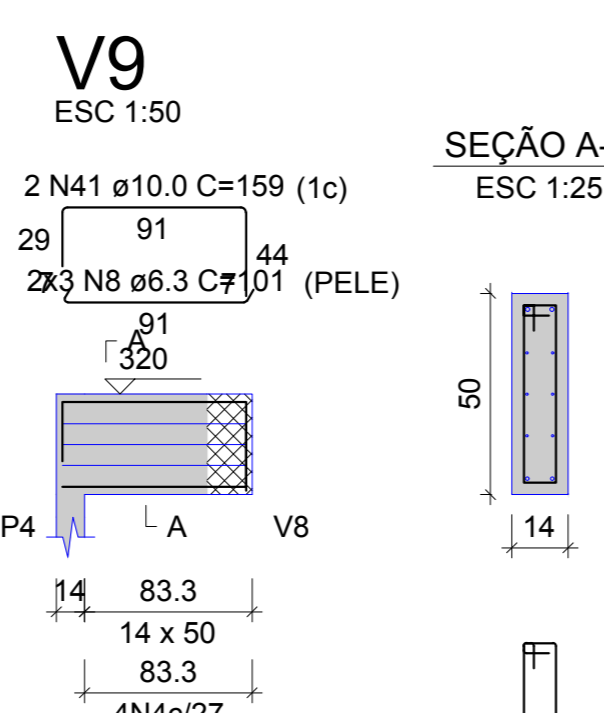
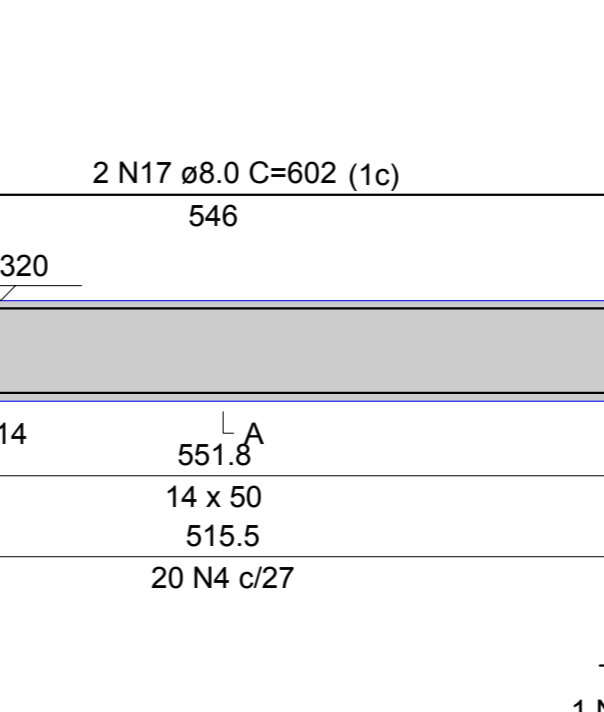
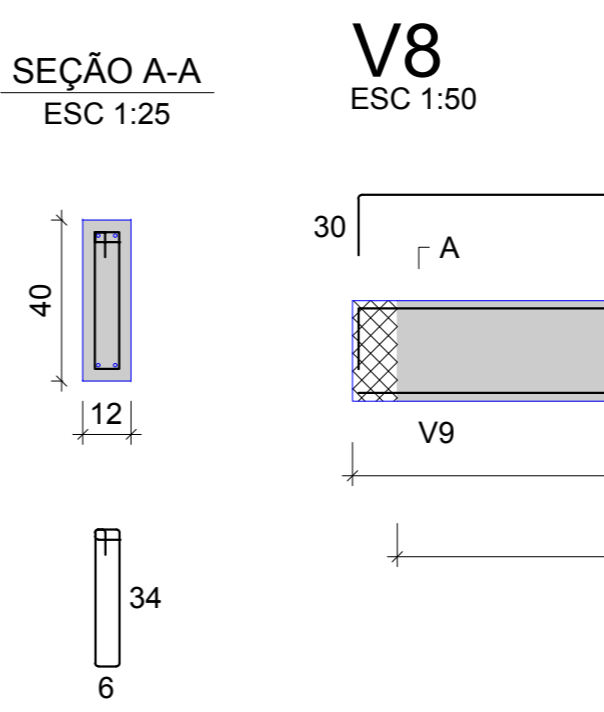
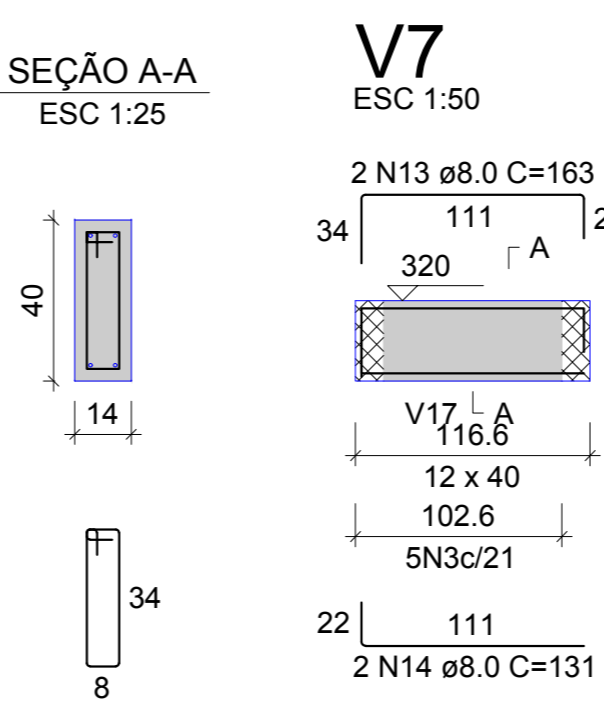
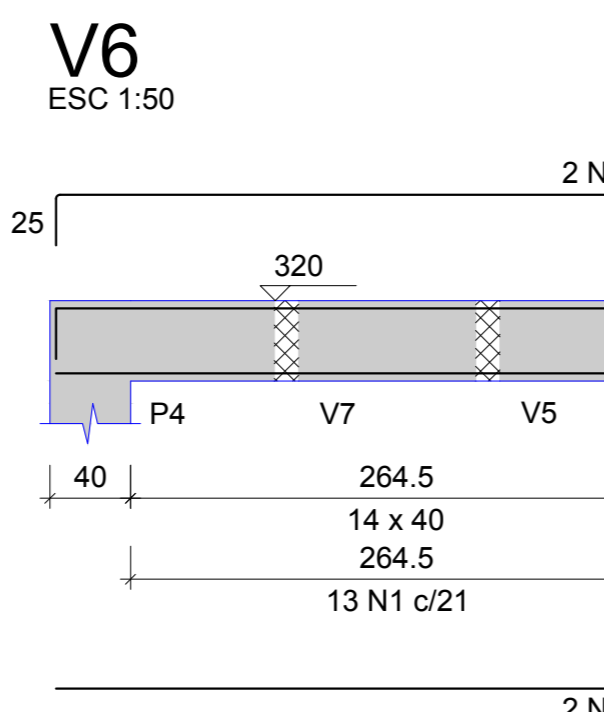
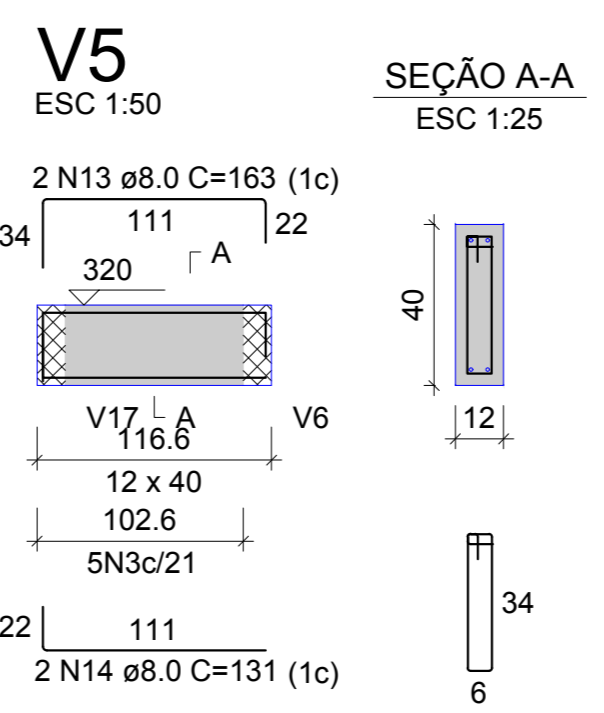
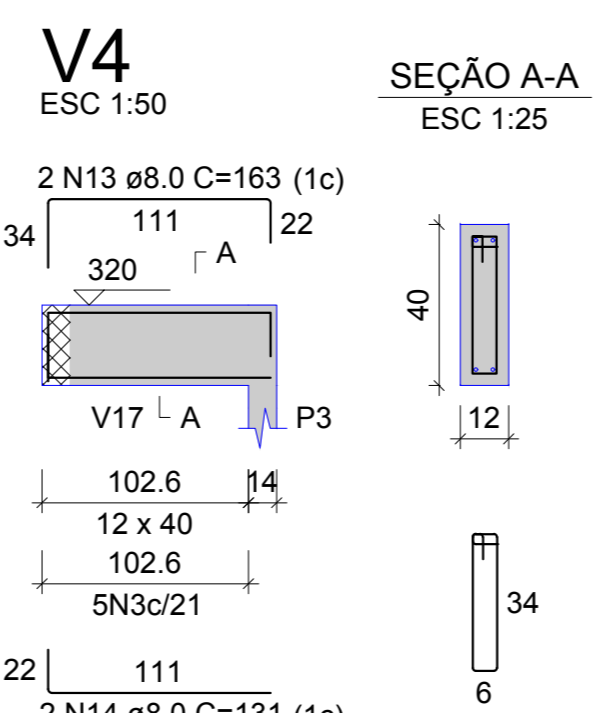
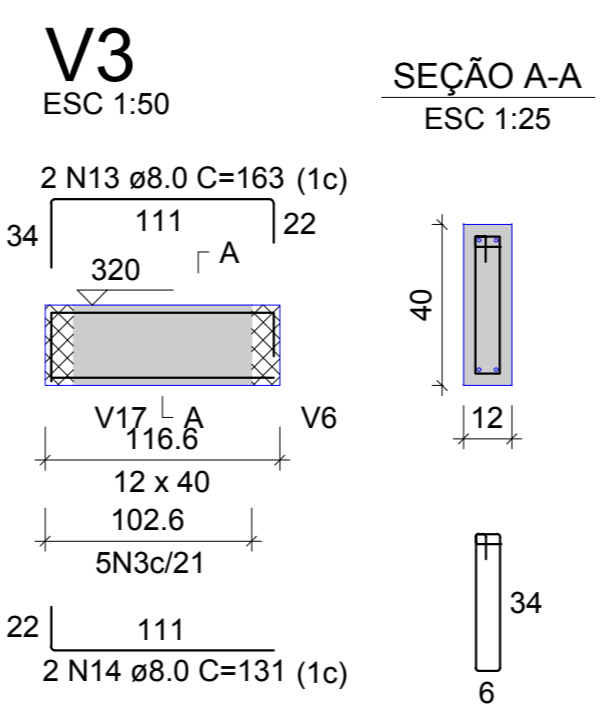
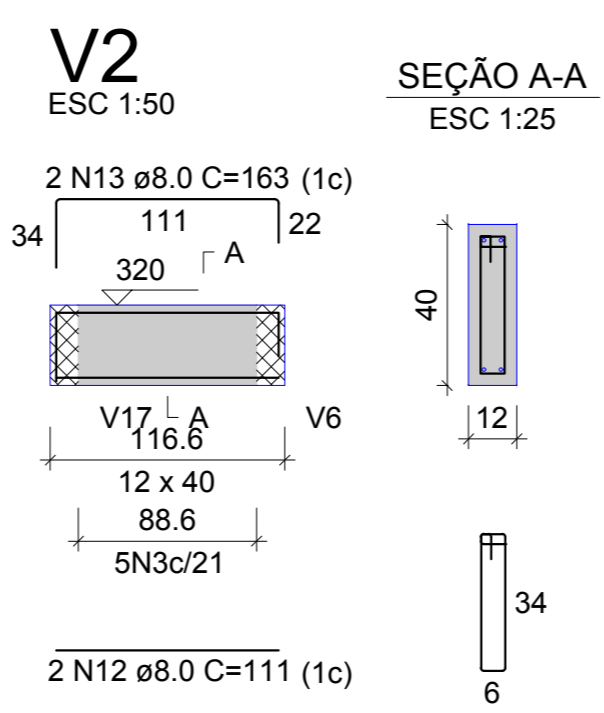
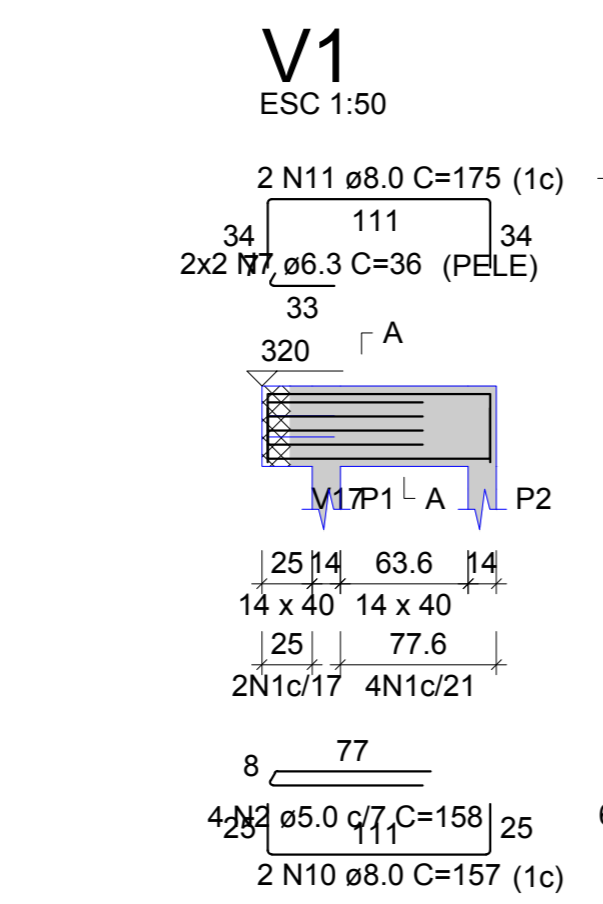
Pilares			
Nome	Seção (cm)	Elevação (cm)	Nível (cm)
P6	14x30	0	600
P7	14x30	0	600
P8	14x30	0	600
P9	14x30	0	600
P10	14x30	0	600

Legenda dos pilares
 Pilar que morre

Legenda das vigas e paredes
 Viga



Forma do pavimento COBERTURA (Nível 600)



Vigas				Pilares			
Nome	Seção (cm)	Elevação (cm)	Nível (cm)	Nome	Seção (cm)	Elevação (cm)	Nível (cm)
V1	14x40	0	320	P1	14x30	0	320
V2	12x40	0	320	P2	14x30	0	320
V3	12x40	0	320	P3	14x30	0	320
V4	12x40	0	320	P4	14x40	0	320
V5	12x40	0	320	P5	14x30	0	320
V6	14x40	0	320	P6	14x30	0	320
V7	12x40	0	320	P7	14x30	0	320
V8	14x50	0	320	P8	14x30	0	320
V9	14x50	0	320	P9	14x30	0	320
V10	12x40	0	320	P10	14x30	0	320
V11	12x40	0	320				
V12	14x40	0	320				
V13	12x40	0	320				
V14	14x50	0	320				
V15	14x50	0	320				
V16	14x50	0	320				
V17	14x40	0	320				
V18	12x40	0	320				
V19	14x40	0	320				
V20	12x40	0	320				
V21	12x40	0	320				
V22	12x40	0	320				
V23	12x40	0	320				
V24	14x27	0	320				

Blocos de enchimento				
Detalhe	Tipo	Nome	Dimensões (cm)	Quantidade
1	Lajota cerâmica	B5/25/20	8 x 25 x 20	156

Lajes								
Dados		Sobrecarga (kgf/m²)						
Nome	Tipo	Altura (cm)	Elevação (cm)	Nível (cm)	Peso próprio (kgf/m²)	Adicional	Acidental	Localizada
L1	Treliçada 1D	14	0	320	309	115	50	-

Características dos materiais			
fck (kgf/cm²)	Ecs (kgf/cm²)	Dimensão máxima do agregado = 19 mm	
250	241500		

Legenda dos pilares
 Pilar que morre
 Pilar que passa

Legenda das vigas e paredes
 Viga

RELAÇÃO DO AÇO

AÇO	N	DIAM (mm)	QUANT	C.UNIT (cm)	C.TOTAL (cm)
CA60	1	5.0	113	95	10735
CA50	2	5.0	4	158	632
	3	5.0	66	91	6006
	4	5.0	54	115	6210
	5	5.0	1	160	160
	6	5.0	59	69	4071
	7	6.3	4	36	144
	8	6.3	6	101	606
	9	6.3	6	89	534
	10	8.0	2	157	314
	11	8.0	2	175	350
	12	8.0	4	111	444
	13	8.0	12	163	1956
	14	8.0	12	131	1572
	15	8.0	2	624	1248
	16	8.0	2	670	1340
	17	8.0	2	602	1204
	18	8.0	2	119	238
	19	8.0	2	168	336
	20	8.0	2	332	664
	21	8.0	2	378	756
	22	8.0	2	151	302
	23	8.0	2	327	654
	24	8.0	2	369	738
	25	8.0	2	111	222
	26	8.0	2	414	828
	27	8.0	2	470	940
	28	8.0	2	985	1970
	29	8.0	2	1017	2034
	30	8.0	2	137	274
	31	8.0	2	169	338
	32	8.0	2	468	936
	33	8.0	2	514	1028
	34	8.0	2	144	288
	35	8.0	2	176	352
	36	8.0	2	107	214
	37	8.0	2	147	294
	38	8.0	4	127	508
	39	8.0	4	159	636
	40	8.0	4	872	3488
	41	10.0	2	159	318
	42	10.0	2	134	268
	43	12.5	2	558	1116

RESUMO DO AÇO

AÇO	DIAM (mm)	C.TOTAL (m)	PESO + 10% (kg)
CA50	6.3	12.8	3.5
CA60	8.0	264.7	114.9
	10.0	5.9	4
	12.5	11.2	11.8
	5.0	278.1	47.2
PESO TOTAL (kg)			
CA50	134.1		
CA60	134.1		
Volume de concreto (C-25) = 3.50 m³			
Área de forma = 60.43 m²			

- NOTAS
- 1- CONCRETO DA ESTRUTURA FCK 25MPA;
 - 2- USAR TELA Q-92 OU SIMILAR NO CAPEAMENTO DAS LAJES;
 - 3- ANTES DO CORTE E DOBRAMENTO DAS ARMADURAS VERIFICAR COMPRIMENTO NECESSÁRIO PARA MONTAGEM DAS PEÇAS ESTRUTURAS;
 - 4- EFETUAR CURA DO CONCRETO POR UM PERÍODO NÃO INFERIOR A 7 DIAS;
 - 5- A RETIRADA DAS ESCORAS DEVE OCORRER SOMENTE APÓS 15 DIAS E COMEÇANDO SEMPRE DOS VÃO PARA OS APOIOS;
 - 6- CONFIRMAR MEDIDAS IN LOCO;
 - 7- O PROJETO NÃO DEVERÁ SER ALTERADO SEM AVISO E AUTORIZAÇÃO DO PROJETISTA;

Nº REVISÃO	DESCRIÇÃO	REVISADO POR	DATA

ENGENHEIRO LUCAS ANDRADE
 PROJETO ENGENHEIRO CIVIL CREA/SE-271604997-1

RESPONSÁVEL TÉCNICO

PREFEITURA MUNICIPAL DE MOITA BONITA/SE

CLIENTE



ESCOLA RURAL
 PROFª. AURINHA VIEIRA DE MENEZES

LOCAL
 POVOADO CAPUNGA
 MOITA BONITA/SE

PROJETO ESTRUTURAL

PLANTAS
 FORMA TIPO I - VIGAS TIPO I

DATA JUNHO 2021 ESCALA 1/75 PRANCHIA 02/10